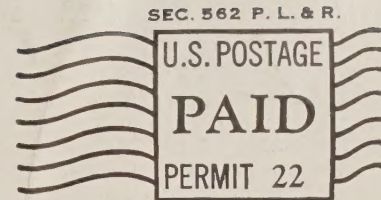
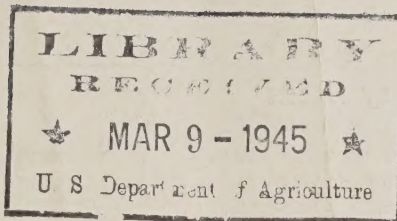


## **Historic, Archive Document**

Do not assume content reflects current scientific knowledge, policies, or practices.



62.71  
 RETURN POSTAGE GUARANTEED —



# HARROLD'S - REVIEW

January 20, 1945.

Vol. 4, No. 1.

HARROLD'S PANSY GARDENS & GREENHOUSES

P. O. BOX 29 — GRANTS PASS, OREGON.

## OUR FORTY-THIRD YEAR

As for the past three years we continue this series of folders in place of the former catalogues which used a great deal more paper. They afford you the information essential to the purchase and use of our well known specialties. Editions will be spread throughout the year so as to offer most material as it is available and seasonable. However, as many items are available and seasonable throughout the year or for several months, we hope that you will file each edition as it arrives and refer to them often. By so doing you will help us to serve you better with a minimum of material and labor used. We will gladly replace any issue which may become lost of course if we are still able to do so.

We hope to maintain prices at the lowest possible level and as stable as we can. In re-issuing a listing of a group of stock, prices current at the time we go to press will of course be given and these prices will always apply after the date of that issue. In ALL cases quotations are made subject to change in market price, taxes or government regulation and prior sale without notice. This is simply normal trade practice that is dictated by the current unsettled conditions. We'll do our best to serve you well and do appreciate your co-operation and patronage.

## The Pansy Situation

This MUST be appraised as TIGHT at this time. Large wholesale plantings have been generally reduced this year because of scarcity of labor in many sections where wholesale growers have been operating. It is safe to say that at this time the supply of plants in the hands of these growers is the smallest in the history of the industry. We are practically sold out as you will see farther along in this list. As for the retailer who grows his own, there is certainly no more than normal supplies for his own trade in his hands and it is doubtful if many of these growers are going to release much of their stock to fellow tradesmen in view of the prospects of heavy demand from the public.

The overall picture is that there will not be enough Pansies to meet the demand by any means. The demand for Pansies has been increasing for the past several seasons along with general demand for all gardening materials.

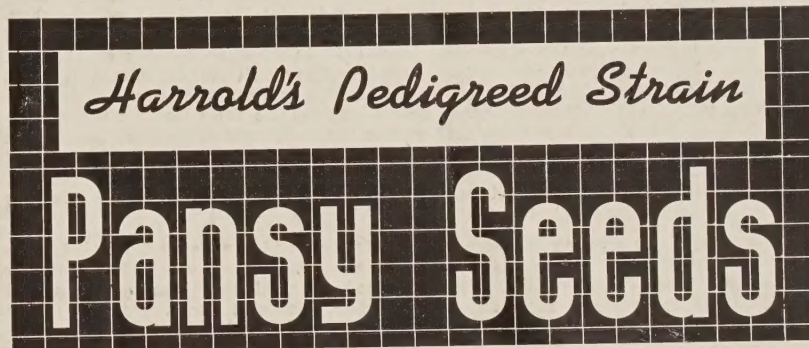
Another factor which has reduced the supply was that last August and September when the most of the commercial plantings were made, weather conditions were far from favorable in much of the U. S. and the supply of seeds was decidedly short because of generally late harvests and a shortage of labor among the seed growers. All of this has resulted in a substantial reduction in supply.

### THERE IS STILL TIME TO REMEDY THIS

It is still possible to plant seeds of Pansies and handling them the same as the tender annuals you can make nice plants for April and May sales. They will require no more care than any of the easily grown annuals and in many cases a lot less heat; for they may be shifted into cold frames or outdoor beds as soon as real heavy freezing is past. The plants won't be as heavy as the fall sown stock usually is but can be made to show several large blooms in time for spring sale if sown early. We recommend planting before February 20th. but they can be bloomed by May 20th. if planted before March 10th.

The price of blooming stock last season reached \$20.00 per 1,000 and higher and we predict that this season may easily see \$30.00 stock which is not too high for good plants that now easily bring \$1.00 to \$1.50 per dozen. If you prepare for this NOW you can supply this demand and you'll find this stock just as profitable as any of the annuals you usually grow. We can offer seeds for immediate planting in the very finest assortment of the Giant Flowered varieties and strains. These are the Harrold's Pedigreed Strain Pansies for which our firm has been famous for more than a quarter century. They are Harrold Originations.

SEE NEXT PAGE FOR CULTURAL SUGGESTIONS



### NOVELTY AND SPECIALTY VARIETIES

VARIETY	PER 500 seeds (1/8-oz.)	
HARROLD'S PEDIGREED NOVELTIES	\$2.00	\$5.00
HARROLD'S SUNSET GIANTS: Our 1944 NOVELTY introduction. Sunset tints of orange, gold & red	2.00	5.00
HARROLD'S PEDIGREED POT PANSIES	1.50	4.00
HARROLD'S PEDIGREED CUT FLOWER PANSIES		
Improved Tall Selection.	2.00	5.00
Original Strain.	1.50	4.00

### HARROLD SELECT SEPARATE COLORS

VARIETY	PER 1,000 seeds (1/8-oz.)					
	1/8-oz.	1/4-oz.	1/2-oz.	1-oz.	2-ozs.	
HARROLD'S AZURE GIANTS.	\$1.00	\$2.00	\$3.75	\$7.25	\$.....	\$.....
HARROLD'S GOLDEN GIANTS.	1.00	2.00	3.75	7.25	.....	.....
HARROLD'S RUBY GIANTS.	1.00	2.00	3.75	7.25	.....	.....

### OUTSTANDING GIANT MIXTURES

VARIETY	PER 1,000 seeds					
	1/8-oz.	1/4-oz.	1/2-oz.	1-oz.	2-ozs.	
HARROLD'S PEDIGREED SWISS GIANTS	1.00	2.25	4.25	8.25	16.00	28.00
HARROLD'S PEDIGREED GIANT ART SHADES.	1.00	2.25	4.25	8.25	16.00	28.00
HARROLD'S PEDIGREED GIANTS.	1.00	2.00	3.75	7.25	14.00	24.00
HARROLD'S ALL-AMERICAN BEDDING MIXTURE.	1.00	1.50	2.75	5.25	10.00	18.00
HARROLD'S IMPROVED SWISS.	1.00	1.40	2.50	4.75	9.00	16.00
HARROLD'S OREGON MIRACLE MIXED.	1.00	1.25	2.25	4.00	7.50	14.00

To obtain the pound price multiply the one ounce price by ten. Four ounces of a variety will be supplied at the pound rate.

FOR DESCRIPTIONS SEE JUNE 10th., ISSUE.

See Next Page For Standard Separate Colors

**Standard Separate Color Pansy Seeds**

VARIETY	PER 1,000 seeds	1/8-oz.	1/4-oz.	1/2-oz.	1-oz.
CORONATION GOLD: Fine large pure yellow	\$1.00	\$1.75	\$3.25	\$6.25	\$12.00
SWISS ALPENGLOW: Dark red shades.	1.00	2.00	3.75	7.25	14.00
SWISS BERNA: Violet blue.	1.00	1.50	2.75	5.25	10.00
SWISS LAKE OF THUN: Thuner Sea or Ullswater Blue. Very brilliant.	1.00	2.00	3.25	6.25	12.00
SWISS LUNA: Sulphur yellow self.	1.00	1.50	2.75	5.25	10.00
SWISS RHEINGOLD: Deep yellow with a velvety center blotch of brown or black.	1.00	2.00	3.25	6.25	12.00
SWISS PURE WHITE: The best pure white and very popular.	1.00	2.00	3.25	6.25	12.00
BABY DELIGHT: A very pleasing miniature Pansy. Plants are not more than 8" high and the flowers a little over an inch across. The color light blue with face.	1.00	1.40	2.25	4.25	8.00

Because of limited quantity available no pound price can be quoted now.

**Spring Culture of Pansies**

While Pansies in the main are usually planted in July, August and September; transplanted outdoors in the fall and wintered either in open beds under mulch, or in coldframes for sale the following spring, it is possible and practical to plant them during January and February in the greenhouse and obtain good salable stock for April and May. In this case they are handled very much the same as the popular annuals with the exception that they may be moved out into coldframes or outdoor beds much earlier than most stock without danger of loss.

Seeds should be sown in flats filled with three-fourths good garden loam and a fourth of well rotted cow manure or rich compost. Sandy loam is preferable or soil from which the green part of a heavy sod has been skimmed. It is desirable to have a good fiber or humus content to this soil and it will handle better if worked through a four to the inch mesh screen. Plant the seeds broadcast on a lightly tamped surface and cover lightly with granulated peat moss or the same soil as used in the flat. Again tamp lightly. Cover only about 1/4 inch deep or just enough to hide the seeds. Keep in a temperature of 45 to 50 degrees at night until germination takes place. Until germination occurs avoid any dryness of the seed bed. Afterwards, however, supply just enough moisture to keep the plants from suffering. Over watering at this stage will cause trouble from damping off. If this should bother reduce moisture still farther and treat the affected area liberally with Flowers of Sulphur. Plants should be transplanted from the seedling flat when they have 6 to 8 leaves.

Grow Pansies continually on the cool side and allow good ventilation on bright days. Do not plant more than 60 plants to the standard florist flat which should be 3 inches or more deep. Dirt bands 2x2 inches may be used for transplanting with excellent results. As soon as severe freezing is past these plants may be shifted to unheated frames with glass sash or in milder localities into open beds. If glass sash is used over the plants use them only in freezing weather or at night. Give the plants all the open sunlight possible. They will make their most rapid growth at this stage when nights are cool and days warm and sunny. Pansies may easily be moved out of the greenhouse before you require the space for the spreading of other annual stock and for that reason they are very economical to grow in point of equipment time and operation. Except for the months of January and February, heat will hardly be required unless it is in the most northerly locations and at no time will heat be a critical requirement so long as it is above 38 degrees after germination takes place.

Because of the scarcity of these plants this year and the demand which is sure to be heavy, we can not stress too greatly the advisability of making a spring sowing of them. Prices which can be obtained on good stock that you can still grow should easily make them one of your most profitable items.

**PANSY PLANTS**

We had reported these all sold, which they virtually are when our stock gets below 100,000. We stopped selling over a month ago so as to be sure of having stock to fill orders then on hand and in most cases, except for an item or two, we will be able to do this. There is still about 65,000 September sown seedlings of 6 to 8 leaf size which we can still offer. As they are composed of varying quantities of several of our best mixtures and separate colors we offer them subject to stock available on receipt of order. If you want separate colors specify preference and we'll fill with them if still available. If not a general mixture will be sent. All stock remaining is of our best strains.

PRICES subject to prior sale are \$1.50 per 100; \$10.00 per 1,000. Terms: strictly cash with order. Less than 250 takes the 100 rate.

**PERENNIAL PLANTS  
One Year Old Field Grown**

These plants are all one year old field grown in sandy loam soil and will be ideal for planting now or in the spring. As with most growers our stock is modest. Far less than the quantities we usually grew before the war and for this reason we suggest early ordering of any item that interests you.

VARIETY	Price per 25	100
<b>ALYSSUM</b> —		
Saxatile Compactum: Golden yellow. Golden yellow about 12" high.	\$1.00	\$3.00
Serpyllifolium: Golden yellow, silver foliage.	1.25	3.50
<b>ANCHUSA</b> —		
LISSADEL: Bright blue, about 3' high.	2.00	6.00
<b>CAMPANULA</b> — Canterbury Bells.		
Calycanthema Mixed: Many bright colors. Very attractive.	2.50	8.00
<b>CARNATION</b> — Hardy.		
Chabaud's Legion of Honor: Glowing salmon rose.	2.25	8.00
Chabaud's Marie Chabaud: Golden yellow.	2.25	8.00
Chabaud's Nero: Fine deepest crimson. A good color.	2.25	8.00
Chabaud's Sparkler: Bright cardinal red. Very showy.	2.25	8.00
Chabaud's Finest Mixed: A blend of all colors.	2.25	8.00

**PERENNIAL PLANTS Continued**

VARIETY	Price per 25	100
<b>CARNATIONS</b> — Hardy.		
Grenadin Black King: A really dark blood red.	\$2.50	\$ 9.00
Grenadin Golden Sun: A very fine medium yellow.	2.50	9.00
Grenadin Snow White: Pure white of very good size.	2.50	9.00
Perpetual Giants Superb Mixed: The largest flowered doubles.	2.50	10.00
<b>DAISY</b> —		
Asterflorum: Double flowered Shasta.	2.00	6.00
Shasta Alaska: Long stemmed white Daisies.	1.00	4.00
<b>DIANTHUS</b> — Pinks.		
Ceasius: Cheddar Pink. A nice border plant.	1.50	4.50
Winteri: Compact plant with large flowers of bright hue.	2.00	6.00
Sweet Wivelsfield: Fine double mixed.	1.50	4.50
<b>DIGITALIS</b> — Foxglove.		
Gloxiniiflora The Shirley Hybrids: Large flowers, spotted throat	2.00	6.00
Gloxiniiflora Rose: A very showy color.	2.00	6.00
<b>GAILLARDIA</b> — Grandiflora.		
Bremen: Coppery scarlet with golden edge.	1.00	3.00
Burgundy: Coppery scarlet self. Very bright.	1.00	3.00
Goblin: Dwarf deep red with yellow border.	1.00	3.00
The Dazzler: Golden yellow with maroon red zone.	1.00	3.00
Tangerine: The largest bright orange.	1.50	4.50
Portola Hybrids: The finest selection of mixed colors.	1.00	3.00
<b>GYPSOPHILA</b> — Baby's Breath.		
Oldhamina: Large flesh pink.	2.50	8.00
Panaculata Double Snow Ball: Finest improved double white.	2.50	8.00
<b>MYOSOTIS</b> — For-get-me Not.		
Sutton's Royal Blue: Brilliant indigo.	2.00	6.00
Oblongata Blue Bird: Improved early deep blue. Good forcer.	3.00	10.00
<b>SWEET WILLIAM</b> — Dianthus Barbatus.		
Dwarf Alpine Mixed: Very fine. About 6" high when in bloom.	2.00	6.00
Single Newport Pink: An outstanding salmon pink.	2.00	6.00
Single Mixed: A wide selection of colors.	1.50	4.50
<b>TRITOMA</b> — Red Hot Poker.		
Pfitzer's Hybrids: Very showy colors.	2.25	8.00
<b>WALLFLOWER</b> —		
Double Extra Choice Mixed: Early flowering about 20" high.	2.50	7.50

NOT LESS THAN TWENTY FIVE OF A KIND SOLD



*Hardy Primroses*

After 7 years breeding work with Primula polyantha and veris and their hybrids, we believe this to be a group of plants which the Florist and Nurseryman will find most valuable. The new strains thrive over a wider range of cultural conditions and are hardy anywhere in the U. S. Modern strains are less exacting as to culture although they do best in a situation which has always proven favorable. An eastern exposure protected from noon and afternoon sun and drying winds; under light tree shade is ideal. Coolness, some shade, ample moisture, good drainage and medium light woodland type of soil gives best results although the plants have a good tolerance. They are ideal rockgarden subjects and once established should not be disturbed over a period of 3 or 4 years. They are as hardy as Pansies and will winter under about the same conditions.

**Culture is Simple**

Seeds may be sown at almost any time of the year that they can be procured. They may be planted from June to Oct. out of doors or in coldframes; or in flats indoors from October to late April or May. New crop seeds usually are ready in July or August.

The seedling soil should be light and seeds covered but lightly. A liberal use, about 1/4th. well rotted cow manure is good. We plant by the Purdue method on top of 1/4 inch of sphagnum moss that has been rubbed through a 1/4 inch screen and firmed over top of flat with a block. After firming moss should be about 1/8th. inch thick. Plant on top of moss but do not cover. A pane of glass should be kept over flat until germination is complete. This method avoids damping off and gives maximum germination. Avoid excessive moisture but see that the moss is kept damp at all times. If covering the seeds with soil or other media do not apply more than 1/8th. inch. Keep bed shaded until germination is complete.

As the seedlings become large enough, about 4 to 6 leaves, prick off into flats and keep in a cool, moist and partly shaded situation. As they are large enough shift from flats to permanent bed or individual pots. If into pots, plunge to the rim in soil to maintain low soil temperature and even moisture. Again protect from severe sun until established. When setting into their final bed add humus, leafmold and/or well rotted cow manure to the soil as the established plant likes a deep, moist, rich loamy soil that is well drained. We do not advise the use of commercial chemical fertilizers but cow manure can be used liberally.

Late Winter and Spring sown plants may be set into their permanent bed in Sept., Oct. or later depending on locality and climate. Sowings planted in Summer and Fall are best set into outdoor beds early the following Spring. Plants may also be propagated by dividing old plants in the Fall. These divisions will bloom the following Spring but seedling plants will be a year old when they bloom.

SEE NEXT PAGE FOR VARIETIES AND PRICES

# Hardy Primrose Plants & Seeds

## HARROLD'S Pedigreed GIANTS

This is a new strain of Polyantha veris hybrids on which we have worked for more than six years. The plants are compact and of robust growth while the flowers are born well above the foliage on fine long stems. Flowers are large, often as big as a silver dollar in clusters from 4 to 8 inches across. Colors are outstandingly brilliant and varied — including yellows, reds, and purples of real brilliance as well as pinks, blues and bronzes that are rare.

### FRESH SEEDS

#### SEEDS OF PRIMULA HARROLD'S Pedigreed GIANTS

Price Per Trade Packet — about 200 seeds, \$1.00; 3 pkts for \$2.50  
 $\frac{1}{16}$  oz. about 1500 seeds, \$5.00

FRESH SEEDS OF HIGH GERMINATION — SUPPLY LIMITED

### PLANTS

SEEDLINGS: From seed flats, \$5.00 per 100; \$42.50 per 1000

TRANSPLANTS: From flats, \$4.00 per 50; \$7.50 per 100; \$60.00 per 1,000

Not less than the smallest offered amount sold. 250 or more at the 1,000 rate.

## OTHER HARDY PRIMROSES

### VARIETY

Price Per Tr. Pkt.  $\frac{1}{16}$  oz.  $\frac{1}{4}$  oz.  $\frac{1}{2}$  oz.

AURICULA: Large flowers of mixed pastel shades these differ from others of this group having smooth leaves. Flowers are dark edged with light center blotch. ..	\$1.00	\$3.00	\$10.50	\$20.00
BERKELEY'S SUPREME: NEW. A polyantha-veris of exquisite size and coloring. Many unusual shades. ..	1.00	3.00	10.50	20.00
PACIFIC GIANT HYBRIDS: NEW. A grand strain developed by one of our foremost Ore. growers. Of large size and an exquisite range of colors. ....	1.00	3.00	10.50	20.00

## Southern Oregon Grown GLADIOLUS BULBS

Offered for Rotation Shipment and Subject to Prior Sale.

Orders will be booked and shipped in rotation of arrival only so long as stocks in our warehouses last. When these are sold there will be no more until after 1945 harvest. Early ordering is advised.

Gladiolus bulbs from the Rogue River Valley here in Southern Oregon have made a most favorable record during the past 20 years and the stock we offer here is the cream of the crop. Varieties are carefully selected and the bulb quality is unsurpassed. As always they are carefully grown and cured and every bulb has been fumigated under the supervision of the Oregon State Department of Agriculture by the most approved fumigant for thrips. These bulbs are clean when sent out.

VARIETY	COLOE	Price Per 100	No. 1	No. 2	No. 3	No. 4
ALDINE: Sea Shell pink. Immense size. ....		\$4.00	\$3.50	\$3.00	\$2.80	
BAGDAD: Smoky old rose. Robust grower. ....			3.50	3.00	2.60	
BONNEVILLE: Lusterous deep pink. ....		4.00	3.50	3.00	2.80	
CARIOCA: Oriental salmon red. A real giant. ....		4.00	3.50	3.00	2.80	
CAESAR: Salmon red. Very good. ....				3.00	2.60	
CHAMOONEY: A very fine rose pink edged cerise. ....		7.60	7.30	6.75	6.00	
EARLY ROSE: A very striking shade of true rose. ..		5.50	4.75	4.50	4.00	
EARLY SUNRISE: Flame. Very early. ....		6.00	5.00	4.00	3.50	
ETHEL CAVE COLE: New light pink. Stiff texture. ....		12.00	10.00	8.00	7.00	
GOLDEN CHIMES: Lovely soft yellow. ....		4.00	3.50	3.00	2.60	
GOLDEN CUP: Clear deep yellow. ....		4.00	3.50	3.00	2.60	
HERITAGE: Finest exhibition pink. ....		4.00	3.60	3.30	3.00	
HONOR: A very fine rich lavender. ....		4.00	3.50	3.00	2.60	
LEONA: Distinctive rose. Vigorous grower. ....		5.50	4.75	4.25	4.00	
MARGARET BEATON: Tall white, scarlet throat. ..		6.00	5.50		4.75	
MAX REGER: Very fine light blue. ....		4.00	3.50	3.00	2.80	
MILFORD: Best tall blue. ....		4.00	3.50	3.00	2.70	
MINUET: Finest lavender. A grand cut flower. ....		4.00	3.50	3.00	2.70	
MRS. LULU HUNT: Very early pink. ....				3.00	2.60	
OREGON STATE: Salmon apricot, canary throat. ....		4.00	3.50	3.00	2.70	
PARADISE: Clear apricot. ....		4.00	3.50	3.00	2.60	
PELEGRINA: Dark violet blue. ....				3.00	2.80	
SNOW PRINCESS: Glistening clear white. ....		6.50	5.50	4.50	4.00	
PEDIGREED BLEND: Made up from the finest of the late introductions. ....		5.00	4.50	4.00	3.50	
CUT FLOWER BLEND: A selection of cutting types. ....		4.00	3.50	3.00	2.80	

TERMS on bulbs are for delivery f. o. b. the office of the transport agency at Grants Pass, Ore., on a basis of cash with order.

NOT LESS THAN 25 OF A SIZE AND/OR KIND SOLD

## Greenhouse Stock

In the group beginning at the top of the next column we offer a very select assortment of both plants and seeds of interest at this time. The plants are all sturdy transplants that will soon grow into excellent stock for spring sale. The seeds are all of the finest specialist grown strains, grown expressly for the professional florist. They are fresh and of tested germination. Wherever seeds and plants are both listed we use these seeds for our own production.

## BEGONIAS—Fibrous rooted types.

SEMPERFLORENS TYPES: Bushy and compact with large flowers.

	Price per 100	Plants Pkt	Seeds Pkt
Christmas Cheer: Brilliant cherry crimson, bronze foliage. ....	\$5.00	\$1.00	\$1.00
Christmas Pink: Bright pink, bronzy foliage. ....	5.00	1.00	1.00
Coral Prize: Coral rose, green foliage with bronze edge. ....	5.00	1.00	1.00
Elegance: Large pink, white center. Foliage green. ....	★ 6.00		
Enchantress: Fresh shade of rose, green foliage. ....	★ 5.00	1.00	1.00
Erfordia: Dwarf rosy carmine. ....	★ 5.00	1.00	1.00
Essen: Scarlet red flowers, bronzy foliage. ....	5.00	1.00	1.00
Fire Sea: Fiery red, green foliage. ....	★ 5.00	1.00	1.00
Ile de France: Large snow white, green foliage. ....	5.00	1.00	1.00
Kaethe Teicher: Very large carmine, dark green foliage. ....	★ 5.00	1.00	1.00
King of the Reds: Glowing scarlet, foliage green edged bronze. ....	★ 5.00	1.00	1.00
Lucifer: Bright salmon scarlet, green foliage. ....	★ 5.00	1.00	1.00
Rose Queen: Large carmine rose, green leaves. ....	★ 5.00		
Masterpiece: Large clear pink, green foliage. ....	5.00	1.00	1.00
Scandinavia: Very large flowered pink, green leaves. ....	★ 6.00		
Snow: A fine pure white. Green foliage. ....	★ 5.00	1.00	1.00
Vernon: Blood red with dark leaves. ....	★ 5.00	1.00	1.00
Zahinger: Flesh pink edged deep rose, green foliage. ....	5.00	1.00	1.00

GRACILIS TYPES: More dwarf and compact than the above.

Adeline: Dwarf pink with green foliage. ....	★ 6.00		
Appleblossom: Delicate pink with green foliage. ....	5.00	1.00	1.00
Carmen: Rose pink, green-bronze foliage. ....	5.00	1.00	1.00
Fire Ball: Fiery crimson. ....	★ 5.00	1.00	1.00
Indian Maid: Bright scarlet, reddish bronze foliage. ....	5.00	1.00	1.00
Illusion: Rose with white blotch. Green leaves. ....	★ 5.00	1.00	1.00
Luminosa: Deep scarlet, bronze foliage. ....	5.00	1.00	1.00
Prima Dona: Rose shaded carmine, green foliage. ....	★ 6.00		
White Pearl: White with green leaves. ....	★ 5.00	1.00	1.00
Mixture: We make this up from above varieties. ....	5.00	1.00	1.00

Varieties marked with star (★) for delivery after February 25th. All others ready for immediate shipment. All seeds shipped promptly.

## CALCEOLARIA—Very fine pot plants.

Our stock of these is excellent.

Dobbie's Perfection: One of the finest strains of many rich colors. ....	\$5.00		
Rugosa Grandiflora Major Mixed: Fine colors and large flowers. ....	7.50		
Multiflora Nana Mixed: Flowers small but lots of them. Grand colors. ....	5.00		

## PETUNIAS—Double, Ruffled and Bedding.

### AMERICAN SUPER DOUBLE

Price Per Grain  $\frac{1}{28}$  oz.

Superior Mixed: A fine blend of colors. High in doubles. ....	\$1.50	\$3.25
---	--------	--------

### GIANTS OF CALIFORNIA

Price Per  $\frac{1}{28}$  oz.  $\frac{1}{4}$  oz.  $\frac{1}{2}$  oz.

Glamour: New large ruffled salmon & rose. Throat cream, veined. ....	\$1.00	\$2.00	\$4.00
Bodger's Florist Supreme: A fine pink, rose & salmon mixture. ....	1.00	1.75	3.00
Dwarf Ramona Giants Mixed: Very dwarf plant & largest of flowers. Heavily ruffled and having a fine range of colors. ....	.80	1.30	2.60
Harrold's Special Blend: NEW. Dwarf plant 7" to 10" high. Colors mostly in darker shades with fine pink and rose shades. ....	1.25	2.25	4.00
Oregon Rose: NEW. Brilliant rose, deeper rose throat. ....	1.00	2.00	4.00
Rose Triumph: NEW. Giant flowered deep rose. Penciled throat. ....	1.00	2.00	4.00

### RUFFLED GIANTS

Price Per  $\frac{1}{28}$  oz.  $\frac{1}{4}$  oz.  $\frac{1}{2}$  oz.

Camilla: Light coppery rose, veined ruby. ....	\$.75	\$1.50	\$3.00
Copper Red: Has dark throat. ....	.60	1.10	2.00
Princess Of Wurtemberg: Rose with garnet throat. ....	.60	1.10	2.00
Salmon Beauty: (Marilyn) Finest rich salmon. ....	1.00	1.75	3.40
Ruffled Monsters: A very usable mixture. Half dwarf habit. ....	.75	1.20	2.25

### GRANDIFLORA COMPACTA

Price Per  $\frac{1}{28}$  oz.  $\frac{1}{4}$  oz.  $\frac{1}{2}$  oz.

Lace Veil: Ruffled pure white. Very attractive potted. ....	\$.75	\$1.25	\$2.50
Setting Sun: Free flowering deep rose, dark throat. ....	.75	1.25	2.50
Compacta Grand Mixed: Fine color range. ....	.75	1.25	2.50

### GRANDIFLORA SINGLE FRINGED

Price Per  $\frac{1}{28}$  oz.  $\frac{1}{8}$  oz.  $\frac{1}{4}$  oz.

Elk's Pride Improved: Finely fringed Elk's purple. ....	\$.75	\$1.50	\$3.00
Golden Jubilee: Carmine rose with golden throat. ....	1.00	1.75	3.25
Miranda: Rose carmine, dark throat. ....	.50	1.00	2.00
Pink Triumph: Brilliant rose pink. ....	.50	1.00	2.00
Pride of Portland: A very good rose pink. ....	.50	1.00	1.60
Romany Lass: Deep crimson with deeper throat. ....	.50	1.00	2.00
Super Fluffy Ruffles Mixed: So ruffled they appear almost double. ....	.75	1.50	3.00
Theodosia: Large fringed rose, golden throat. ....	.75	1.35	2.25
White Beauty: Exquisite pure white. ....	.50	1.00	2.00
Single Fringed Mixed: A fine color blend. ....	.50	.90	1.50

### GRANDIFLORA PLAIN EDGED

Price Per  $\frac{1}{28}$  oz.  $\frac{1}{8}$  oz.  $\frac{1}{4}$  oz.

Brilliant Rose: A very striking color. ....	\$.60	\$1.10	\$2.00
Burgundy: Rich wine red with white throat. ....	.60	1.10	2.00
Dwarf Elk's Pride: Deep purple. Dwarf plant habit. Improved. ....	.65	1.10	2.00
Dwarf Pink Glory: Rose with white throat. Dwarf habit. ....	.65	1.25	2.00
Pink Glory Improved: A rather tall deep rose. ....	.50	.90	1.75
Velvet Flame: New. Velvety blood red. ....	.75	1.40	2.00
Plain Edged Mixture: A fine color blend of select varieties. ....	.50	1.00	1.80

### PENDULA or BALCONY TYPES

Price Per  $\frac{1}{8}$  oz.  $\frac{1}{4}$  oz.  $\frac{1}{2}$  oz.

Black Prince: Deep velvety red. ....	\$.50	\$.90	\$1.75
Brilliant Rose: A very glowing shade of rose. ....	.50	.90	1.50
Cornflower Blue: A rich and attractive shade of blue. ....	.35	.70	1.35
Damask Rose: Tyrian rose veined spectrum red. ....	.50	.90	1.50
Deep Blue: Velvety violet blue. ....	.35	.70	1.35
Red: A fine crimson red. Very showy. ....	.35	.70	1.35
Rosy Morn: Balcony counterpart of the bedding variety. ....	.75		
White: A fine clear white of trailing habit. ....	.30	.55	1.00
Balcony Mixed: Good colors for general use. ....	.30	.55	1.00

### MINIATURE NANA COMPACTA

Price Per  $\frac{1}{8}$  oz.  $\frac{1}{4}$  oz.  $\frac{1}{2}$  oz.

Brilliant Rose Gem: Rich deep rose. Plant about 7", flower 2". ....	\$.50	\$.90	\$1.75
Cream Star: Creamy white. Star shaped flower. ....	.60	1.10	2.00
Rose Gem: Bright medium rose. Same habit. ....	.35	.70	1.35
Rose Crepe de Chine: Novelty. Rich rose crepe textured flowers. ....	1.00		
Violet Gem: Velvety violet. A fine color. ....	.50	.90	1.75
Gem Mixture: All the above colors in mixture. ....	.35	.70	1.35

SEE NEXT PAGE FOR MORE PETUNIA SEEDS

**PETUNIA SEEDS Continued—**

NANA COMPACTA		Price Per	1/8 oz.	1/4 oz.	1/2 oz.
Admiral: Rich violet blue with waved flowers. About 10"		\$ .75	\$1.50	\$5.00	
General Washington: Amaranth red, same as M.W. but darker.		1.00			
Martha Washington: Blush pink with dark violet throat.		.50	1.00	3.00	
Salmon Supreme: Novelty. Salmon pink. Very attractive.		.50	1.00	4.00	
Velvet Ball: New. Large flowered velvety blood red.		.50	.90	1.50	

HYBRIDA NANA ERECTA		Price Per	1/8 oz.	1/4 oz.	1/2 oz.
Alderman: Deep velvety blue.		\$.25	\$.40	\$.75	
Blue Bedder (Sutton). A very nice mid-blue.		.25	.40	.75	
Celestial Rose Improved: A compact deep rose bedder.		.35	.65	1.20	
Glow: Novelty bright rose red with a light throat.		1.00			
King Henry: New. Velvety red. A very dignified color. Pkt. \$5.00		1.50	3.00	6.00	
Rose of Heaven Improved: Dwarf Brilliant rose. Fine bedder.		.35	.65	1.20	
Rosy Morn Improved: Dwarf rose with striking white throat.		.35	.70	1.35	
Rose Queen Improved: A brilliant rose self.		.35	.70	1.35	
Silver Blue: (Heavenly Blue) A nice shade of light blue.		.35	.70	1.20	
Snow Queen: A compact growing pure white.		.25	.40	.75	
Nana Erecta Mixed: The above fine colors and others.		.25	.40	.75	

HYBRIDA (Tall Bedding)		Price Per	1/8 oz.	1/4 oz.	1/2 oz.
Blue Bee: Color of the Jersey Gem Viola.		\$.20	\$.30	\$.50	
Flaming Velvet: Velvety blood red.		.35	.70	1.25	
Hollywood Star: Rich rose. Flower shaped like a 5 pointed star.		.40	.70	1.35	
Howard's Star Improved: Velvety purple, white star in center.		.25	.40	.75	
Radiance: New. Rich cerise rose.		.50	1.00	2.00	

**PRIMULA MALACOIDES—**

Plants offered are transplants.	Price per 100	Plants	Seeds
Fairy Jewels: Double rich rose pink. A fine novelty.	\$5.00		\$1.50
Twinkles: New Double. An attractive soft flesh pink.	5.00		1.50
Enchantress: Single soft salmon rose. Popular.	5.00		1.00
Lavender Glory: Single. A distinctive soft mauve.	5.00		1.00
Snow Flake: Single pure white.	5.00		1.00
Sweetheart: Single Novelty. Salmon pink bordered white.	5.00		1.50
Single Mixed: A fine blend of all colors.	5.00		1.00

**PRIMULA OBCONICA—**

**GIGANTEA:** Largest flowered. Florets often over 1 1/2 inches across.

Wyaston Wonder. Bright crimson and largest of all Obconica.	\$5.00	\$1.50
Blood Red: New. A true velvety blood red that does not fade.	5.00	1.50
Crimson: Mohistein type. A widely used sort.	5.00	1.00
Scarlet: A fine scarlet of the Fassbender type.	5.00	1.00
Rose: Fassbender type.	5.00	1.00
Purple: Fassbender type.	5.00	1.00
Blue: Fassbender type.	5.00	1.00
Spectrum Mixed: A mixture of all colors and types including hybrids	5.00	1.00

**GRANDIFLORA:** Florets smaller but very freely produced.

Lavender: An excellent shade of much value.	5.00	1.00
Rosea: Mullers type. A very fine rose.	5.00	1.00
Appleblossom: A delicate soft pink.	5.00	1.00
White: Very useful in the florists assortment.	5.00	1.00

Half packets of these three types of Primula at 1/2 price plus 10c

**SALVIA— Scarlet Sage.**

These are FRESH, carefully grown seeds of high germination.

VARIETY	Price Per	1/8 oz.	1/4 oz.	1/2 oz.	1 oz.
America: Globe of Fire. Medium height, mid-season.	\$.50	\$1.50	\$2.75	\$5.00	
Blaze of Fire: Earliest and most dwarf of all Salvia.	.75	2.25	4.25	8.00	
Bonfire: —Clara Bedman— Medium tall.	.50	1.40	2.50	4.75	
Harbinger: A fine early flowering dwarf.	.50	1.50	2.75	5.00	
Rocket: Very early dwarf. A fine bedder.	.50	1.60	3.00	5.50	
Splendense: The tallest Salvia. Very showy.	.35	1.25	2.30	4.40	
Zurich: Early flowered medium dwarf.	.50	1.40	2.50	4.75	

**SNAPDRAGONS— Rust Resistant.**

VARIETY	Price Per 100	Plants	Seeds
<b>SUPER MAJESTIC:</b> Plants 16 to 20" high. Large flowers.			
Autumn Glow: Old rose suffused amber.	\$2.00	\$.30	\$.50
Dainty: Delicate soft pink.	2.00	.30	.50
Harmony: Terra cotta yellow.	2.00	.30	.50
Maiden's Blush: Blush pink.		.30	.50
Orange Shades: Rose overlaid orange.	2.00	.30	.50
Red Shades: Crimson, garnet and ruby red.	2.00	.30	.50
Rosé Sensation: Fine rich rose pink.	2.00	.30	.50
Rose Shades: Rich Begonia rose.	2.00	.30	.50
Shell Pink: A grand delicate pink.		.30	.50
Superb Mixed: A blend of all the above colors.	2.00	.30	.50

**MAJUS GRANDIFLORUM:** Height 28 inches.

Amber and Gold: New. Color as named.		.30	.50
Brilliant Rose: True rose pink.	2.00	.30	.50
Buttercup: Light canary yellow.	2.00	.30	.50
Crimson King: Brilliant crimson. Very striking.		.30	.50
Daintiness: Rose pink with white tube.	2.00	.30	.50
Du Barry: New. Flaming salmon rose.	2.00	.40	.75
Orange Sunset: Finest orange shades.		.30	.50
Pinkie: Very fine pure rose pink.	2.00	.30	.50
Rosalie: A grand deep rose.	2.00	.30	.50
Scarlet Defiance: A striking shade of fiery scarlet.	2.00	.30	.50
Yellow Jacket: Very fine deep yellow.	2.00	.30	.50
Cut Flower Mixture: A fine blend of colors adapted for cutting.	2.00	.30	.50

**MAXIMUM SUPER GIANTS.** Height 34 inches.

Alaska: Very large pure white.	2.00	.35	.60
Campfire: Luminous scarlet. Very showy.	2.00	.35	.60
Copper King: Bright burnished copper.	2.00	.35	.60
Crimson: Fiery crimson shades.		.35	.60
Daffodil: A good intense yellow.	2.00	.35	.60

**SNAPDRAGON MAXIMUM SUPER GIANT Continued.**

VARIETY	Price Per 100	Plants	Seeds
Indian Summer: Coppery orange scarlet.		2.00	.35 .60
Loveliness: Soft rose pink.		2.00	.35 .60
Mandarin Yellow: Pure deep yellow.		2.00	.35 .60
Pink Sensation: Brilliant glowing pure pink.		2.00	.35 .60
Salmon Pink Shades: A very nice color as named.		2.00	.35 .60
Swing Time: Brilliant rose pink.		2.00	.35 .60
Yellow Giant: The largest deep yellow.		2.00	.35 .60
Super Giant Mixed: All shades of this type.		2.00	.35 .60

**SNAPDRAGONS— Florists Greenhouse Varieties.**

VARIETY	Price Per 100	Plants	Seeds
Bertha Baur: Fine orchid lavender.	\$ .75	\$3.00	
Better Times: (Windmiller) The finest early cerise rose.	1.50	10.00	
Bronze Queen: (Somerset) A very fine salmon bronze.	1.00	8.00	
Beulah: (Smith) Outstanding rich bronze.	1.50	10.00	
Ceylon Court— Dark: A darker yellow than standard Court.	.75	3.00	
Cheviot Maid Supreme: Darker pink. More popular.	.75	3.00	
Cheviot Maid Yellow: Very popular early yellow.	2.00	.75 3.00	
Christmas Cheer: (Windmiller) A grand early rose pink.	1.00	7.00	
Coates' Yellow Perfection: A fine midseason yellow.	2.00	.75 3.00	
Daybreak: Vigorous Briarcliff Rose pink. Very good.	2.00	.75 4.00	
Ethel: New large bright golden yellow. Fairly early.		1.00 6.00	
Glorious: New reddish copper, yellow lip. Early & popular.		.75 4.00	
Harrold's Red Improved: Deep wine red. Fairly early.	2.00	.75 4.00	
Judd's Early Dark Pink: Very good and quite early.	2.00	.75 4.00	
Kirkwood Bronze: Very fine orange buff. Early.	2.00	.75 4.00	
La France: (Windmiller) Ruffled satiny pink. Outstanding.		1.00 6.00	
Lucky Strike: Fine and very popular pure white.		.75 3.00	
Marie Louise: (Raasch) Strong growing sea shell pink.		1.50 10.00	
Maryland Pink: Fine early pastel pink. Large.		1.50 10.00	
Miss Wooster: Early dark bronze. Good quality.	2.00	.75 4.00	
Olsen's Early Yellow: A fine deep yellow.	2.00	.75 4.00	
Olsen Snow White. A very useful florist white.		1.00 8.00	
Peggy Schumann. An outstanding large quality pink.		1.50 10.00	
Portland Pink: A grand rose pink of early habit.		1.50 10.00	
Rockwood Pink Supreme: A very fine cut flower pink.		1.50 10.00	
Rose Orange: A new finely colored early one.		.75 4.00	
Sara Lou: (Smith) A fine commercial yellow.		1.50 10.00	
Schlegel Early White: A vigorous early of large size.		1.50 10.00	
Schlegel Early Yellow: Vigorous. Quality over a long season.		1.00 8.00	
Schlegel Paper White: Early pure white.		1.50 10.00	
Schumann Yellow: Outstanding large yellow of nice shade.		1.50 10.00	
Schrock Orchid: A very useful delicate lavender.		1.00 7.00	
Snow White: (Windmiller) Late white. Easter and M. D.		.75 4.00	
St. Louis Early Pink: (Rowe) Really a quality silvery pink.		1.00 8.00	
Sunburst Improved: Color of the Sunburst Rose. Nice.	2.00	.75 4.00	
Sun Tan: Extra early orange tan. One of the most popular.	2.00	.75 3.00	
Talisman: Double bronze. A fancy retail flower.	2.00	1.50 9.00	
Velvet Beauty: Rich American Beauty crimson.	2.00	.75 3.00	
Velvet Supreme: Velvety scarlet-crimson. A warm tone.	2.00	1.00 6.00	
Westover Fringed White: Fairly early fringed white.		.75 4.00	
Yellow Wonder: (Bezdek) Early and free flowering. Good.		1.00 8.00	
Florist Blend: Best cut flower formula.	2.00	.75 2.50	

We supply trial packets of any of the above at 25c each when order for these is for 4 packets or more. Packets listing at 75c will be supplied 3 for \$2.00; 5 for \$3.00; 10 for \$5.00.

**VERBENAS— Grandiflora.**

VARIETY	Price Per	1/8 oz.	1/4 oz.	1/2 oz.	1 oz.
Annapolis Blue: NEW. A true mid-blue.	\$.40	\$.75	\$1.50	\$2.75	
Beauty of Oxford Hybrids: Rose pink, varied shades.	.40	.75	1.50	2.75	
Cerise Queen: Salmon cerise.	.40	.75	1.50	2.75	
Crimson Glow: A fine glowing shade of crimson.	.40	.75	1.50	2.75	
Etna: Garnet red, deep cream eye.	.40	.75	1.50	2.75	
Floradale Beauty: Rosy red shades.	.40	.75	1.50	2.75	
Lavender Glory: Lavender with cream eye.	.40	.75	1.50	2.75	
Lucifer: Brilliant scarlet self.	.40	.75	1.50	2.75	
Luminosa: Flame pink shading to salmon.	.40	.75	1.50	2.75	
Flamingo: NEW. Vivid rose pink.	.40	.75	1.50	2.75	
Rose Cardinal: A fine rose shade with cardinal overtone.	.40	.75	1.50	2.75	
Royale: Royal blue with cream yellow eye.	.40	.75	1.50	2.75	
Spectrum Red: Intense bright red.	.40	.75	1.50	2.75	
Violacea Stellata: Rich violet with white eye.	.40	.75	1.50	2.75	
White: pure white.	.40	.75	1.50	2.75	
Finest Mixed: All the above shades and others.	.30	.55	1.10	2.00	

**TERMS OF SALE**

**PRICES—** All prices are made on a basis of cash with order. No deviation will be made from this rule except where special credit arrangement and usual reference check has been made. **SEEDS** can be sent C. O. D. and will be so forwarded in all instances where the above rule is not met. Strictly cash with order on all shipments outside the U. S. A. **PLANTS AND BULBS ARE NEVER** sent on a C. O. D. basis. **ALL** prices are subject to market changes without notice and all offers are subject to stock being available on receipt of your order.

**REMITTANCE—** May be by any of the usual commercial methods of transferring funds. The amount must be in United States money, collectable net for the full amount of the order. **WE WILL NOT** accept postage stamps as any part of remittance. We use metered postage exclusively and stamps are a total loss.

**TRANSPORTATION— SEEDS** will be shipped by insured post, prepaid. Free Air Mail delivery may be had on seeds under conditions mentioned in our literature. **PLANTS AND BULBS** are delivered in so far as our responsibility is concerned when accepted by the transportation agency at Grants Pass, Oregon. Thereafter all goods travel as the property of the purchaser. We recommend that all perishable material travel Railway Express and unless instructed differently this material will all be forwarded by that agency.

**OUR RESPONSIBILITY—** In view of the reasonable prices quoted herein and the varied conditions under which this stock will be grown after leaving our care, it is manifestly impossible for us to guarantee in any manner, cultural or descriptive, the crop resulting from the use of the material listed. Ordering from this list will definitely be construed as your acceptance of these terms as set forth and it is understood that in all cases our liability shall be limited to the actual purchase price paid for any material supplied.